



WHEEL ASSEMBLY  
SCALE 1:1



WHEEL ASSEMBLY (ALT VIEW)  
SCALE 1:1

PARTS LIST

ITEM	QTY	PART NAME	MATERIAL	DESCRIPTION
1	1	AXLE	STEEL	
2	1	BUSHING	BRONZE	OILESS
3	1	HUB	ALUMINUM	
4	1	COLLAR	ALUMINUM	
5	2	PANEL RING	ALUMINUM	.12" UNIFORM THICKNESS
6	1	WHEEL	HARD RUBBER	
7	6	RIVETS	STANDARD	Ø.31, 1.00" INSIDE LENGTH
8	2	WASHERS	STANDARD	I.D. Ø1.00", O.D. Ø2.12", .18" THICK EQUALLY SPACED
9	1	SPRING PIN	STANDARD	Ø.25, 1.875" LONG



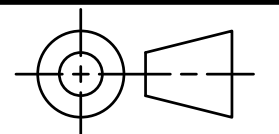
DIGITAL DESIGN  
GRAPHICS  
TECHNOLOGY

WWW.DDGT.NET

GENERAL NOTES:

ALL FILLETS R.12" UNLESS OTHERWISE NOTED

ALL CHAMFERS ARE .06" X 45° UNLESS OTHERWISE NOTED



TOLERANCES UNLESS SPECIFIED:  
DECIMAL INCHES:  
X = ±.020  
XX = ±.010  
XXX = ±.005  
FRACTIONAL ±1/64"  
ANGLES ±1 DEGREE  
SURFACES 32

CLASS: DDGT 121

ASSIGNMENT #: 9

AUTOCAD DRAWING NAME:  
WHEEL ASSEMBLY

FIG #: 11-55

MANAGER: G. STROMMEN

DRAFTER: K LOVE

DATE: 1/19/23

SCALE: AS NOTED

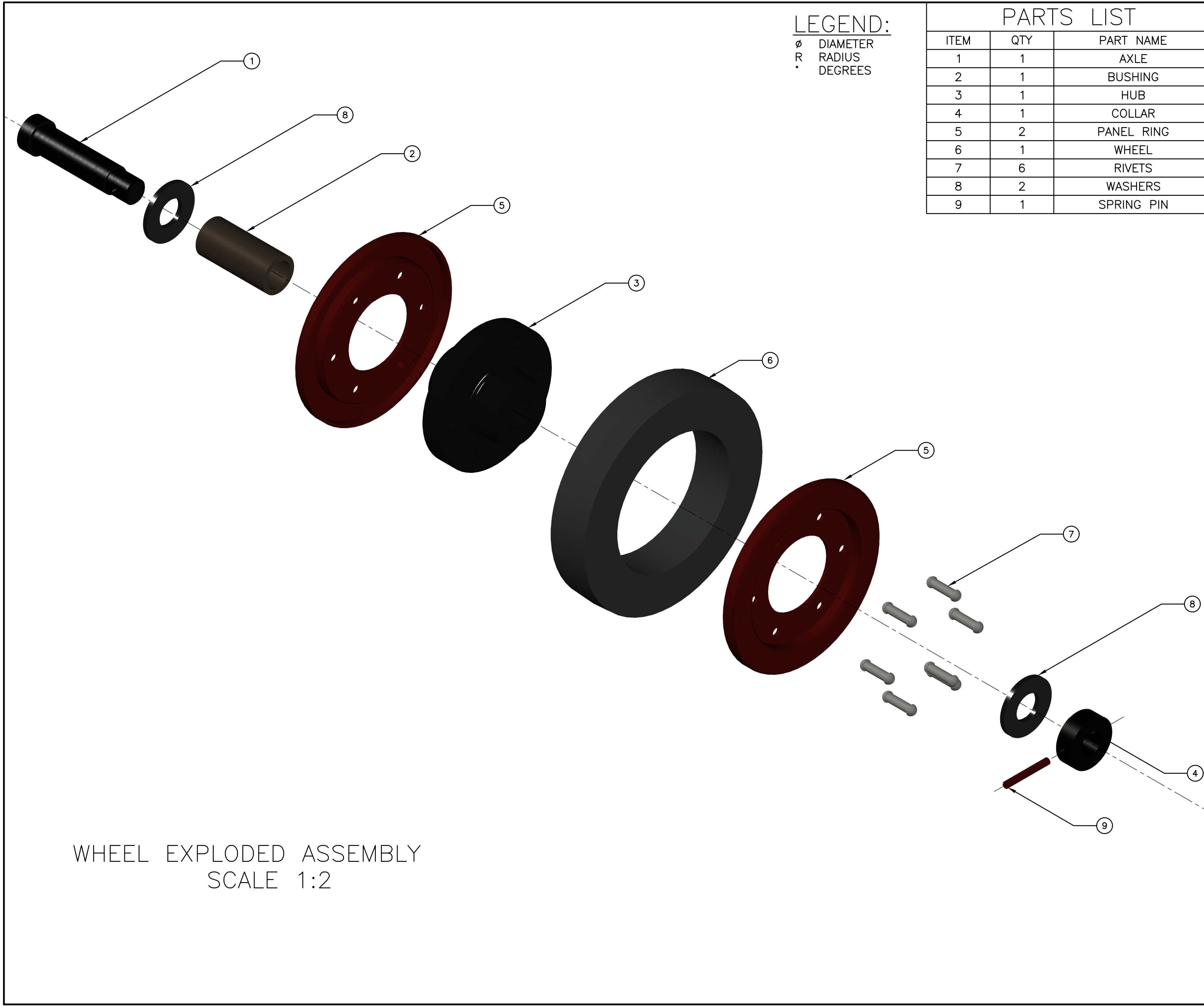
PAGE #: 1 OF 3

LEGEND:

Ø DIAMETER  
R RADIUS  
° DEGREES

REV#	DATE	DESCRIPTION	APPROVED BY	PAGE#
3	1/19/2023	INSIDE DIAMETER OF RING CHANGED FROM Ø2.80 TO Ø2.70	G. STROMMEN	3
2	1/19/2023	CENTERLINE DIAMETER FOR RIVET PATTERN CHANGED FROM Ø3.5 TO Ø3.94	G. STROMMEN	3
1	1/19/2023	TAPER ANGLE ON WHEEL CHANGED FROM 5° TO 3.5°	G. STROMMEN	3

REVISION TABLE



**LEGEND:**  
 ∅ DIAMETER  
 R RADIUS  
 ° DEGREES

PARTS LIST		
ITEM	QTY	PART NAME
1	1	AXLE
2	1	BUSHING
3	1	HUB
4	1	COLLAR
5	2	PANEL RING
6	1	WHEEL
7	6	RIVETS
8	2	WASHERS
9	1	SPRING PIN

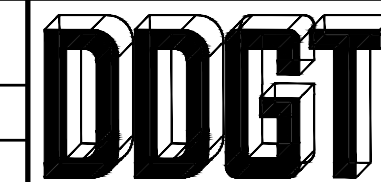
**DDGT**  
 DIGITAL DESIGN  
 GRAPHICS  
 TECHNOLOGY  
 WWW.DDGT.NET

GENERAL NOTES:  
 ALL FILLETS R.12"  
 UNLESS OTHERWISE  
 NOTED  
 ALL CHAMFERS ARE  
 .06" X 45° UNLESS  
 OTHERWISE NOTED

WHEEL EXPLODED ASSEMBLY  
 SCALE 1:2

TOLERANCES UNLESS SPECIFIED:  
 DECIMAL INCHES:  
 X = ±.020  
 XX = ±.010  
 XXX = ±.005  
 FRACTIONAL ±1/64"  
 ANGLES ±1 DEGREE  
 SURFACES 32

CLASS: DDGT 121  
 ASSIGNMENT #: 9  
 AUTOCAD DRAWING NAME:  
 WHEEL ASSEMBLY  
 FIG #: 11-55  
 MANAGER: G. STROMMEN  
 DRAFTER: K LOVE  
 DATE: 1/19/23  
 SCALE: AS NOTED  
 PAGE #: 2 OF 3



DIGITAL DESIGN  
GRAPHICS  
TECHNOLOGY

WWW.DDGT.NET

GENERAL NOTES:

ALL FILLETS R.12"  
UNLESS OTHERWISE  
NOTED

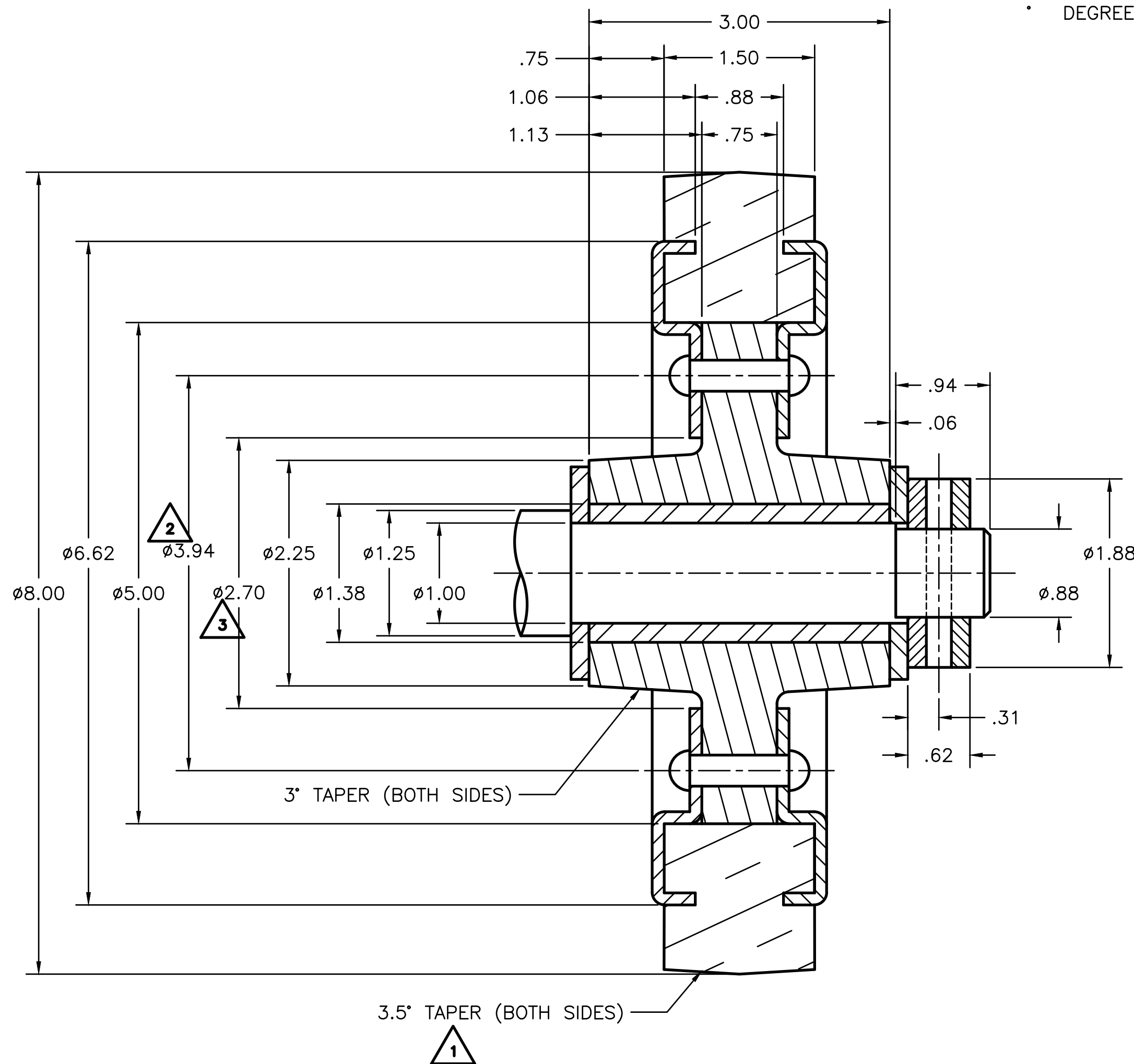
ALL CHAMFERS ARE  
.06" X 45° UNLESS  
OTHERWISE NOTED

### PARTS LIST

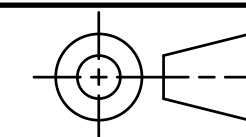
ITEM	QTY	PART NAME
1	1	AXLE
2	1	BUSHING
3	1	HUB
4	1	COLLAR
5	2	PANEL RING
6	1	WHEEL
7	6	RIVETS
8	2	WASHERS
9	1	SPRING PIN

### LEGEND:

∅ DIAMETER  
R RADIUS  
° DEGREES



SCALE 1:1



TOLERANCES UNLESS SPECIFIED:  
DECIMAL INCHES:  
X = ±.020  
XX = ±.010  
XXX = ±.005  
FRACTIONAL ±1/64"  
ANGLES ±1 DEGREE  
SURFACES 32

CLASS: DDGT 121

ASSIGNMENT #: 9

AUTOCAD DRAWING NAME:  
WHEEL ASSEMBLY

FIG #: 11-55

MANAGER: G. STROMMEN

DRAFTER: K LOVE

DATE: 1/19/23

SCALE: AS NOTED

PAGE #: 3 OF 3

REV#	DATE	DESCRIPTION	APPROVED BY	PAGE#
3	1/19/2023	INSIDE DIAMETER OF RING CHANGED FROM ∅2.80 TO ∅2.70	G. STROMMEN	3
2	1/19/2023	CENTERLINE DIAMETER FOR RIVET PATTERN CHANGED FROM ∅3.5 TO ∅3.94	G. STROMMEN	3
1	1/19/2023	TAPER ANGLE ON WHEEL CHANGED FROM 5° TO 3.5°	G. STROMMEN	3

### REVISION TABLE